



STEEL_LINE

This family of satellite antennas is characterized by the back support made of galvanised steel. The high quality electrostatic powder coating of the dish grants an elevated resistance against the corrosive agents. With the exception of the 100cm, the elevation range allowed is from 0-90° without passing pole.

STEEL LINE	TEF40	TEF57	TEF60	TEF80	TEF100
Aluminium	-	-	-	-	-
Steel	•	•	•	•	•
Anthracite colour	•	•	•	•	•
White colour	•	•	•	•	•
Red colour	-	-	-	-	-
Dish dimensions (mm)	424x424	512x603	644x574	845x745	1090x991

LNB holding arms



TEF40_TEF57_TEF60_TEF80



TEF100

Azimuth/Elevation brackets

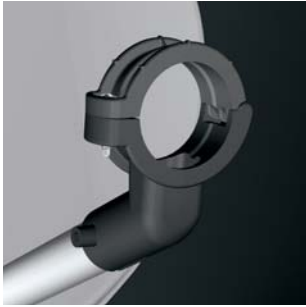


TEF40_TEF57_TEF60



TEF100

LNB holders



TEF40_TEF57_TEF60_TEF80



TEF100



TEF80

Antenna backstructures



TEF40_TEF57_TEF60



TEF80



TEF100

Offset Antenna		TEF40	TEF57	TEF60	TEF80	TEF100
Dish dimensions (external)	mm.	424x424	512x603	644x574	845x745	1090x991
Gain at 10,75 GHz	dB	32,0	33,2	34,7	36,8	39,8
Gain at 11,75 GHz	dB	32,2	34,2	35,2	37,8	40,5
Gain at 12,75 GHz	dB	32,6	34,9	36,1	38,5	40,9
Half power beamwidth at 12,75 GHz	deg.	< 5,0°	< 3,1°	< 3,1°	< 2,2°	< 1,8°
Cross polar discrimination on main axis	dB	> 27	> 27	> 27	> 27	> 27
Mast clamp for	mm.	32 - 60	32 - 60	32 - 60	32 - 60	32 - 60
Elevation range	deg.	5° - 90°	5° - 90°	5° - 90°	5° - 90°	12° - 52°
Elevation with passing pole	deg.	48°	38°	40°	40°	44°
F/D ratio	-	0,6	0,65	0,6	0,6	0,55
Offset angle	deg.	25°	19°	25°	25°	25°
Windloading at 72 Km/h	Kg	5	9	10	17	30
Windloading at 144 Km/h	Kg	20	34	41	69	119
Windloading at 216 Km/h	Kg	45	76	92	156	268
Feed bracket diameter	mm.	23 / 40	23 / 40	23 / 40	23 / 40	23 / 40
Available reflector materials	-	steel				
Available colours	-	white/anthracite				
Back mount	made of:	galvanized steel				
AZ/EL holder	made of:	galvanized steel				
LNB Arm	made of:	aluminium: diameter 22mm				galv. steel: 30x20mm
LNB holder	made of:	plastic				