

FIBRE_LINE



FIBRE_LINE

The back support and the LNB arm made of plastic, make this antenna extremely light and manageable, granting at the same time an elevated mechanical solidity. Thanks to the particular assembly system of the LNB arm, it is indicated for quick installations, assuring really high-performances.

FIBRE LINE	PE57	PE60
Aluminium	-	-
Steel	•	•
Anthracite colour	•	•
White colour	•	•
Red colour	•	•
Dish dimensions (mm)	512x603	644x574

LNB arms



PE57



PE60

LNB holder



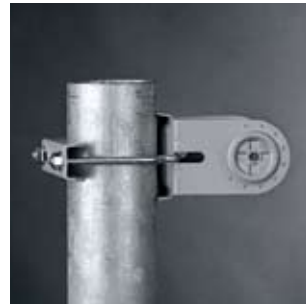
PE57

Antenna backstructure



PE57_PE60

Azimuth/Elevation bracket



PE57_PE60

Offset Antenna		PE57	PE60
Dish dimensions (external)	mm.	512x603	644x574
Gain at 10,75 GHz	dB	33,2	34,7
Gain at 11,75 GHz	dB	34,2	35,2
Gain at 12,75 GHz	dB	34,9	36,1
Half power beamwidth at 12,75 GHz	deg.	< 3,1°	< 3,1°
Cross polar discrimination on main axis	dB	> 27	> 27
Mast clamp for	mm.	32 - 60	32 - 60
Elevation range	deg.	5° - 85°	5° - 85°
Elevation with passing pole	deg.	39°	41°
F/D ratio	-	0,65	0,6
Offset angle	deg.	19°	25°
Windloading at 72 Km/h	Kg	9	10
Windloading at 144 Km/h	Kg	34	41
Windloading at 216 Km/h	Kg	76	92
Feed bracket diameter	mm.	23 / 40	23 / 40
Available reflector materials	-	steel	
Available colours	-	white/anthracite/red	
Back mount	made of:	plastic + metal inserts	
AZ/EL holder	made of:	galvanized steel	
LNB Arm	made of:	plastic	
LNB holder	made of:	plastic	