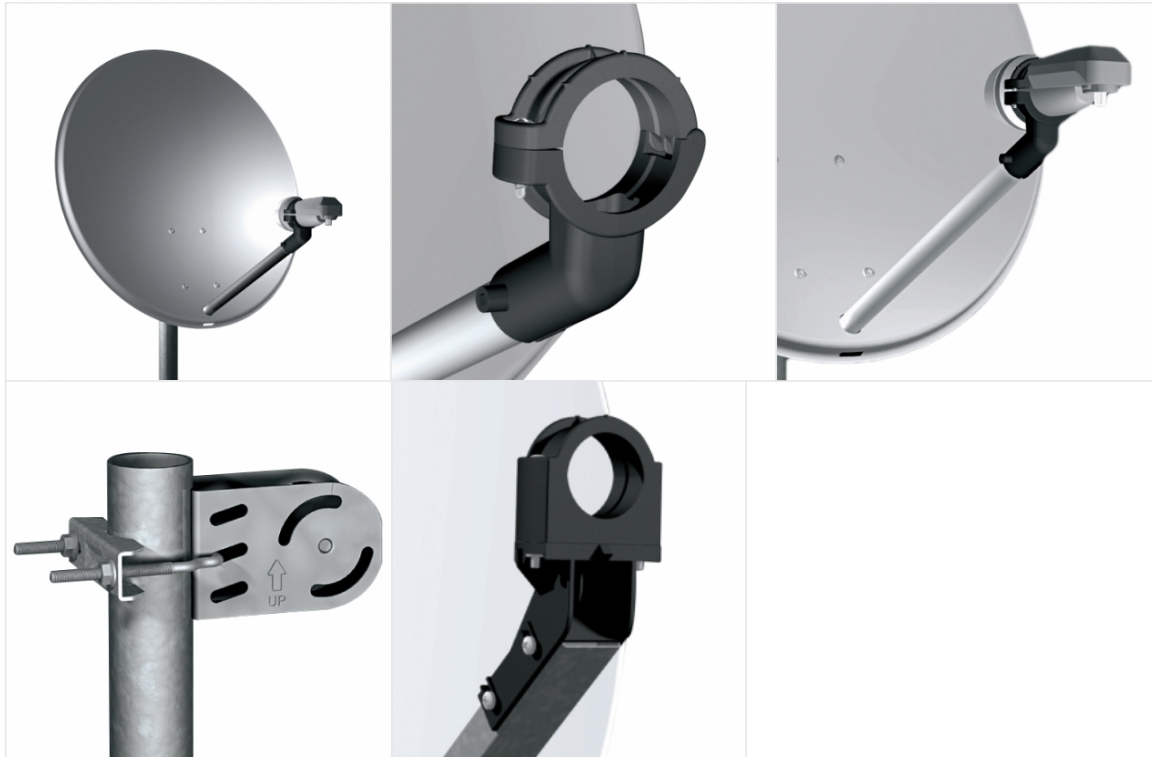


TEF 60

Satellite antenna



TECHNICAL DATA

Dish dimension (external) (mm)

644x574

Gain at 10,75 GHz (dB)

34,7

Gain at 11,75 GHz (dB)

35,2

Gain at 12,75 GHz (dB)

36,1

Half power beamwidth at 12,75 GHz (deg.)

< 3,1°

Cross polar discrimination on main axis (dB)

>27

Mast clamp for (mm)

32 - 60

Elevation range (deg.)

5° - 90°

Elevation with passing pole

40°

F/D ratio

0,6

Offset angle (deg.)

25°

Windloading at 72 Km/h (Kg)

10

Windloading at 144 Km/h (Kg)

41

Windloading at 216 Km/h (Kg)

92

Feed bracket diameter (mm)

23 / 40

Available reflector materials

steel

Available colours

white

anthracite

Back mount made of

galvanized steel

AZ/EL holder made of

galvanised steel

LNB Arm (diameter 22 mm) made of

aluminium

LNB Holder made of

plastic