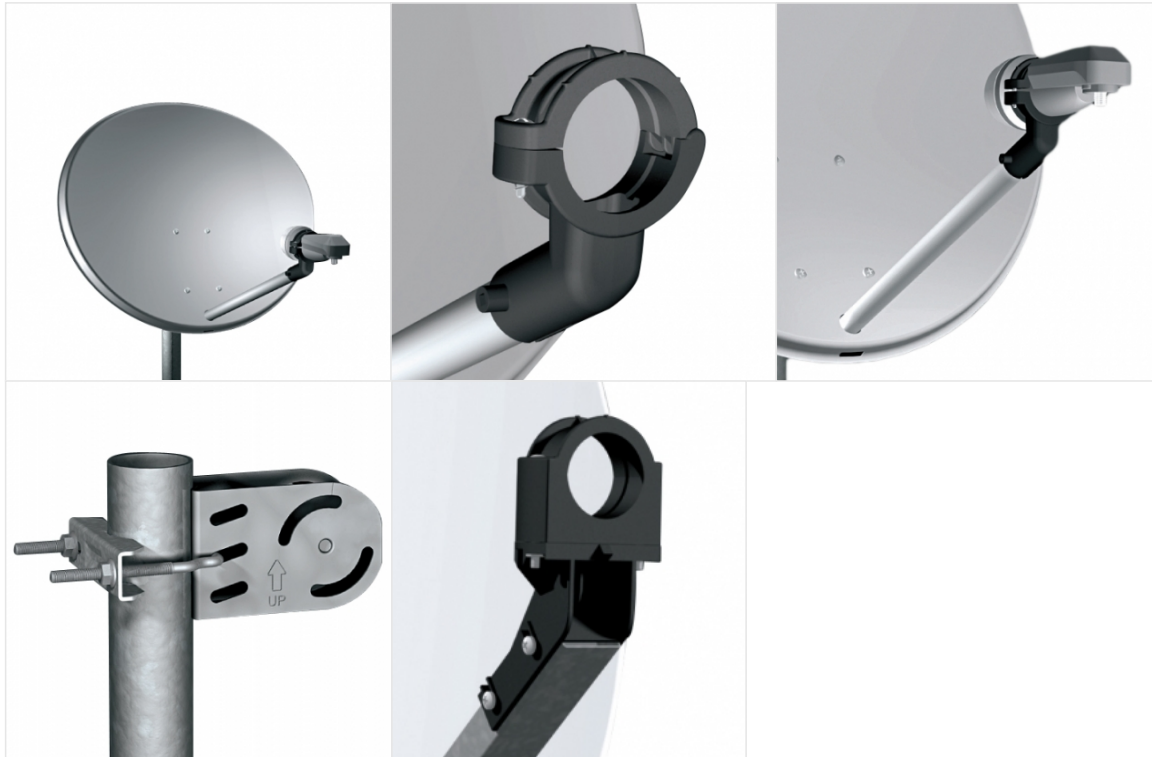


# TEF 57

## Satellite antenna



### TECHNICAL DATA

**Dish dimension (external) (mm)**

512x603

**Gain at 10,75 GHz (dB)**

33,2

**Gain at 11,75 GHz (dB)**

34,2

**Gain at 12,75 GHz (dB)**

34,9

**Half power beamwidth at 12,75 GHz (deg.)**

< 3,1°

**Cross polar discrimination on main axis (dB)**

>27

**Mast clamp for (mm)**

32 - 60

**Elevation range (deg.)**

5° - 90°

**Elevation with passing pole**

38°

**F/D ratio**

0,65

**Offset angle (deg.)**

19°

**Windloading at 72 Km/h (Kg)**

**9**

**Windloading at 144 Km/h (Kg)**

**34**

**Windloading at 216 Km/h (Kg)**

**76**

**Feed bracket diameter (mm)**

**23 / 40**

**Available reflector materials**

**steel**

**Available colours**

**white**

**anthracite**

**Back mount made of**

**galvanized steel**

**AZ/EL holder made of**

**galvanized steel**

**LNB Arm (diameter 22 mm) made of**

**aluminium**

**LNB Holder made of**

**plastic**